

## Your independent and competent partner

### REFERENCE AND TRADITION

- More than 50 years of experience, founded in 1967 by 12 pension funds
- Pioneer in management of pooled vehicles for Swiss pension funds
- Approx. 420 investors in Switzerland
- Investors are small, mid and large sized, corporate and public pension plans

### ATTRACTIVE OFFERING

- Comprehensive and broadly diversified range of products for a flexible implementation of a pension funds' investment strategy under BVV2 guidelines
- Independent and transparent manager selection process
- Support for our investors regarding allocation and re-allocation of their assets
- Exercise of shareholder voting rights attached to Swiss shares by IST and for foreign equities by the respective portfolio manager

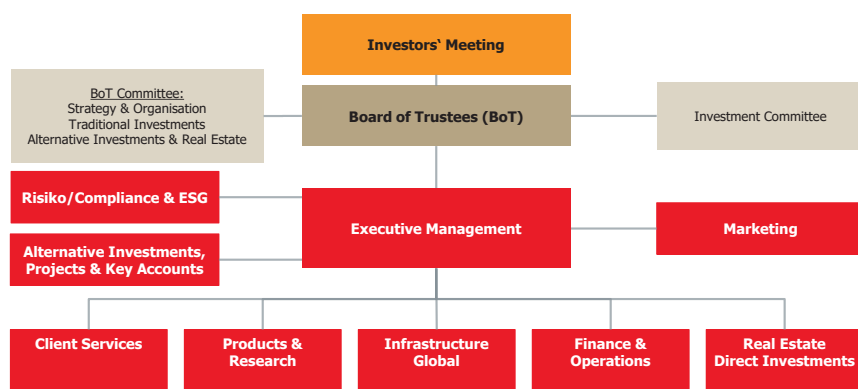
### INDEPENDENT PARTNER

- Long-term strategy dedicated to occupational benefit plan
- No representation or influence of financial institutions in the board of trustees
- Professionals of the IST focus on the needs of Swiss pension plans
- Offices in Zurich and Lausanne

### SUCCESSFUL OPEN ARCHITECTURE

- Building blocks concept with clearly defined product characteristics
- In-depth and focused funds and manager analysis
- Management of the IST investment funds by nearly 20 Swiss and international asset managers
- Balanced funds are managed internally primarily using IST funds
- Multi-level risk control

### ORGANISATIONAL STRUCTURE

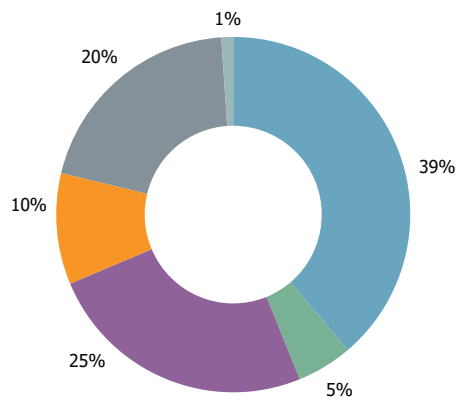


- Custodian Bank: Bank Lombard Odier & Cie AG, Geneva
- Fund Admin. Company: Lombard Odier AM (Switzerland) SA
- Auditors: Ernst & Young AG, Zurich
- Supervisory: Occupational pension supervisory committee

### VERY EXPERIENCED BOARD OF TRUSTEES

- Andreas Markwalder, President, Independent Expert, Oberägeri
- Fabio Camilli, Member, CEO, Lucerne Pension Fund, Lucerne
- Remo Keller, Member, Director, Pension Foundation BKW, Bern
- Stephan Köhler, Member, Senior Portfolio Manager, Pension Fund of F. Hoffmann-La Roche, Basel
- Stefan Kühne, Vice-President, Head of Securities, PKE Energy Pension Fund, Zurich
- Karel Leder, Member, Head of Capital Investments, Pension Fund of the State of Fribourg, Fribourg
- Serge Ledermann, Member, Independent Expert, Tannay
- Christoph Ryter, Member, Director, Migros Pension Fund, Schlieren
- Prof. Dr. Jacques-André Schneider, Member, Lawyer, Geneva
- Peter Voser, Member, Deputy Head of Capital Investments, Aargau Pension Fund, Aarau
- Adrian Weibel, Member, Head of Capital Investments, Deputy Head of the Pension Fund Thurgau, Kreuzlingen
- Beat Wüst, Member, Head of Asset Management, GastroSocial Pension Fund, Aarau

### ASSETS UNDER MANAGEMENT: CHF 10.4 BN (GROSS)



■ Equities ■ Bonds ■ Real Estate ■ MIXTA ■ Alternatives ■ Money Market

### TRANSPARENT AND COMPETITIVE INVESTMENTS

- 47 investment funds of the IST, IST2 and IST3
- Fees at original costs (non-profit organisation)
- Attractive, volume-based fee structure
- Daily liquidity \*
- Daily valuation \* (available at around 12.00), Forward-Pricing
- Publications: Internet, Bloomberg, Reuters, Telekurs etc.
- Minimum administrative efforts for investors

\* except Immo Invest Switzerland, Real Estate CH Residential, Real Estate CH Residential Focus, Residential Mortgages Switzerland, Real Estate Global, Insurance Linked Strategies, Private Equity, Infrastructure Debt and Global Infrastructure

	Bonds			Equities		Real Estate		Alternative Investments	Balanced
	Money Market	CHF	Foreign Currencies	Switzerland	Foreign	Switzerland	Foreign		
Passive		Swiss Bonds Index		Swiss Equities Index SMI	Globe Index				
					Globe Index Hedged CHF				
Active	Money Market CHF	Foreign Bonds CHF		Swiss Equities Small Mid Caps	Global Equities Low Vol	Immo Invest Switzerland	Global REIT	Insurance Linked Strategies USD	Mixta Optima 15
		Governo Bond Hedged CHF	Governo Bond	Swiss Equities Dividend Strategy**	Global Small Mid Caps	Immo Optima Switzerland	Real Estate Global USD	Insurance Linked Strategies Hedged CHF	Mixta Optima 25
		Foreign Bonds Hedged CHF	Foreign Bonds	Swiss Equities SPI Plus *	America Small Mid Caps	Real Estate CH Residential	Real Estate Global Hedged CHF	Global Infrastructure***	Mixta Optima 35
		Global Convertibles Hedged CHF	Emerging Markets Bonds		Europe Small Mid Caps	Real Estate CH Residential Focus		Infrastructure Debt USD***	Mixta Optima 30**
		Global Corporates IG Hedged CHF			Equities Emerging Markets Low Vol			Infrastructure Debt 2 USD***	Mixta Optima 75
		Residential Mortgages Switzerland**						Infrastructure Debt 3 EUR***	
								Private Equity EUR***	
								Private Equity 2 EUR***	
								Private Equity 3 Impact EUR***	

\* one investment fund of the IST and the IST2 respectively \*\* investment fund of the IST2 \*\*\* investment fund of the IST3

### IST Investmentstiftung

Manessestrasse 87 | 8045 Zürich

Tel. 044 455 37 00 | Fax 044 455 37 01

info@istfunds.ch | istfunds.ch

### IST Fondation d'investissement

Avenue Ruchonnet 2 | 1003 Lausanne

Tél 021 311 90 56 | Fax 044 455 37 01

info@istfunds.ch | istfunds.ch