

Your independent and competent partner

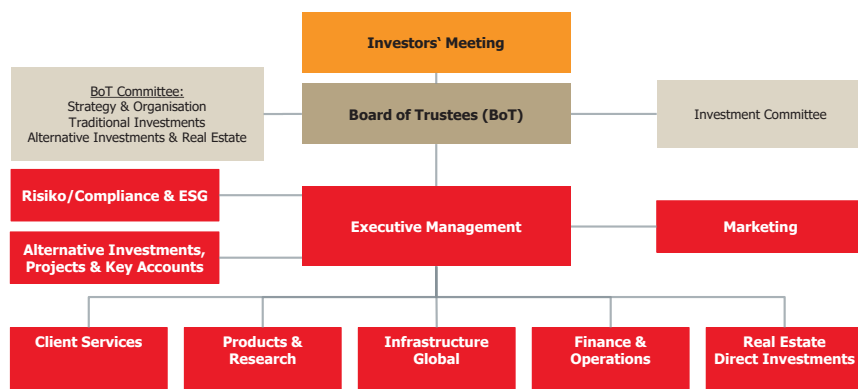
REFERENCE AND TRADITION

- More than 50 years of experience, founded in 1967 by 12 pension funds
- Pioneer in management of pooled vehicles for Swiss pension funds
- Approx. 460 investors in Switzerland
- Investors are small, mid and large sized, corporate and public pension plans

ATTRACTIVE OFFERING

- Comprehensive and broadly diversified range of products for a flexible implementation of a pension funds' investment strategy under BVV2 guidelines
- Independent and transparent manager selection process
- Support for our investors regarding allocation and re-allocation of their assets
- Exercise of shareholder voting rights attached to Swiss shares by IST and for foreign equities by the respective portfolio manager

ORGANISATIONAL STRUCTURE



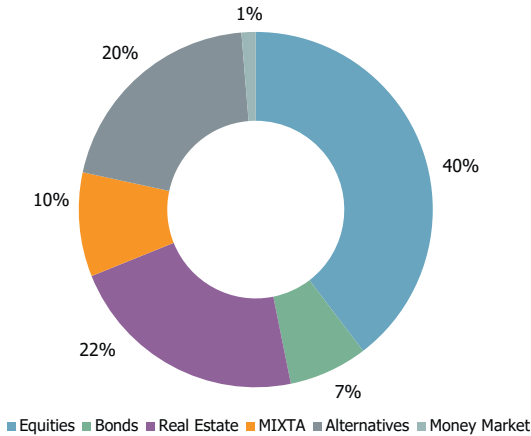
- Custodian Bank: Bank Lombard Odier & Cie AG, Geneva
- Fund Admin. Company: Lombard Odier AM (Switzerland) SA
- Auditors: Ernst & Young AG, Zurich
- Supervisory: Occupational pension supervisory committee

VERY EXPERIENCED BOARD OF TRUSTEES

- Yvar Mentha, President, Partner BRP Bizzozero & Partners SA, Geneva
- Remo Keller, Member, Director, Pension Foundation BKW, Bern
- Stephan Köhler, Member, Senior Portfolio Manager, Pension Fund of F. Hoffmann-La Roche, Basel
- Stefan Kühne, Vice-President, Head of Securities, PKE Energy Pension Foundation, Zurich
- Serge Ledermann, Member, Independent Expert, Tannay
- Josef Lütolf, Member, Head of Asset Management, Lucerne Pension Fund, Lucerne
- Christoph Ryter, Member, Director, Migros Pension Fund, Schlieren
- Prof. Dr. Jacques-André Schneider, Member, Lawyer, Geneva
- Peter Voser, Member, Deputy Head of Capital Investments, Aargau Pension Fund, Aarau
- Adrian Weibel, Member, Head of Capital Investments, Deputy Head of the Pension Fund Thurgau, Kreuzlingen
- Beat Wüst, Member, Head of Asset Management, GastroSocial Pension Fund, Aarau

Your independent and competent partner

ASSETS UNDER MANAGEMENT: CHF 10 MRD. (GROSS)



TRANSPARENT AND COMPETITIVE INVESTMENTS

- 46 investment funds of the IST, IST2 and IST3
- Fees at original costs (non-profit organisation)
- Attractive, volume-based fee structure
- Daily liquidity *
- Daily valuation * (available at around 12.00), Forward-Pricing
- Publications: Internet, Bloomberg, Reuters, Telekurs etc.
- Minimum administrative efforts for investors

* except Immo Invest Switzerland, Real Estate CH Residential, Real Estate CH Residential Focus, Residential Mortgages Switzerland, Real Estate Global, Insurance Linked Strategies, Private Equity, Infrastructure Debt and Global Infrastructure

| | Bonds | | | Equities | | Real Estate | | Alternative Investments | Balanced |
|---------|------------------|-------------------------------------|------------------------|-----------------------------------|-----------------------------------|----------------------------------|--------------------------------|--|-------------------|
| | Money Market | CHF | Foreign Currencies | Switzerland | Foreign | Switzerland | Foreign | | |
| Passive | | Swiss Bonds Index | | Swiss Equities Index SMI | Globe Index | | | | |
| | | | | | Globe Index SRI | | | | |
| | | | | | Globe Index Hedged CHF | | | | |
| | | | | | Europe Index SRI | | | | |
| Active | Money Market CHF | Foreign Bonds CHF | | Swiss Equities Small Mid Caps | Global Equities Low Vol | Immo Invest Switzerland | Global REIT | Insurance Linked Strategies USD | Mixta Optima 15 |
| | | Governo Bond Hedged CHF | Governo Bond | Swiss Equities Minimum Variance** | Global Small Mid Caps | Immo Optima Switzerland | Real Estate Global USD | Insurance Linked Strategies Hedged CHF | Mixta Optima 25 |
| | | Foreign Bonds Hedged CHF | Foreign Bonds | Swiss Equities SPI Plus* | America Small Mid Caps | Real Estate CH Residential | Real Estate Global Hedged CHF | Global Infrastructure*** | Mixta Optima 35 |
| | | Global Convertibles Hedged CHF | Emerging Markets Bonds | | Europe Small Mid Caps | Real Estate CH Residential Focus | | Infrastructure Debt USD*** | Mixta Optima 30** |
| | | Global Corporates IG Hedged CHF | | | Equities Emerging Markets Low Vol | | | Infrastructure Debt 2 USD*** | Mixta Optima 75 |
| | | Residential Mortgages Switzerland** | | | | | | Infrastructure Debt 3 EUR*** | |
| | | | | | | | | Private Equity EUR*** | |
| | | | | | | | | Private Equity 2 EUR*** | |
| | | | | | | | Private Equity 3 Impact EUR*** | | |

* one investment fund of the IST and the IST2 respectively ** investment fund of the IST2 *** investment fund of the IST3

IST Investmentstiftung

Manessestrasse 87 | 8045 Zürich
 Tel. 044 455 37 00 | Fax 044 455 37 01
 info@istfunds.ch | istfunds.ch

IST Fondation d'investissement

Avenue Ruchonnet 2 | 1003 Lausanne
 Tél 021 311 90 56 | Fax 044 455 37 01
 info@istfunds.ch | istfunds.ch